

ZT Series Polycrystalline

Solar Module



255P/260P/265P GLASS-GLASS

Efficiency

High Module Conversion Efficiencies 16,1% utilizing three or four bus bars per cell*

Optimized Strength

Minimum standard for wind 2400Pa to a Mechanical load capacity up to 5400Pa meet customer's needs for durability on high mountains, sea shores, & paths between buildings

Certifications

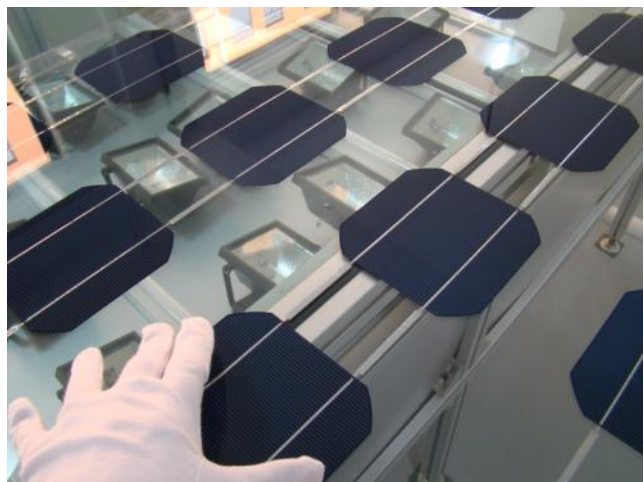
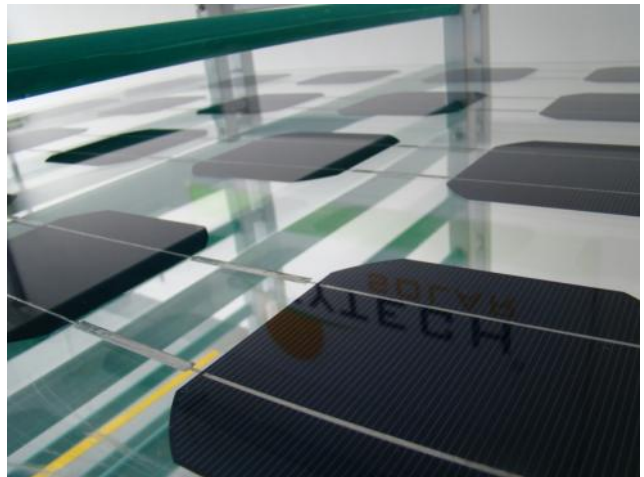
IEC 61215:2005, IEC 61730:2004, UL 1703-3rd Ed: 2014, ULC/ORD C1703-01:2014, ISO 9001:2008, PSK 024:2008

Positive Tolerance

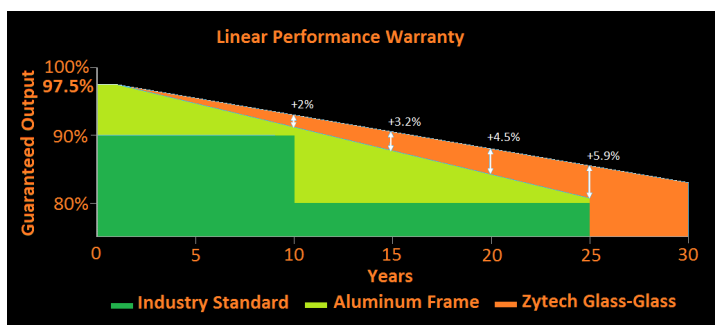
Strict quality control guarantees higher average power output according to positive tolerance 0% to +5%.

Warranty

Peace of Mind Guaranteed with a 30 Year Linear Power Warranty 0,5% anual degradation and Product Quality Ensured for ten years



* The pictures do not necessarily match with the products ZT 255-260-265P Glass-Glass



EMPOWERING You
To Change The Future

Zytech was founded in Zaragoza (Spain) in 2005. Since then the group has progressively increased its infrastructure and production capacity to become a global power with offices and headquarters in Spain, Germany, France, Italy, BENELUX, Mexico, United States of America, Korea, Malaysia and China.

Zytech takes pride in their R&D department which specializes in product enhancement, state-of-the-art machinery and rigorous quality control that guarantees an European quality product at the best price.



www.zytechsolar.com

ZT Series Polycrystalline

Solar Module



255P/260P/265P GLASS-GLASS

Cell Data

Technology	Polycrystalline Silicon
Number Per Module	60
Dimension	156 × 156mm (6 inches)
Orientation	6 × 10

Thermal Data

Nominal Operating Cell Temperature (NOCT)	44°C ± 2°C
Temperature Coefficient of Voc	- 0.32% / °C
Temperature Coefficient of Isc	+0.05% / °C
Temperature Coefficient of Power Pmax	- 0.41 % / °C

Electrical Data (STC)

		ZT255P	ZT260P	ZT265P
Maximum power (W)	Pmax	255	260	265
Power Output Tolerance (%)		0% to +5%		
Maximum Power Voltage (V)	Vmpp	30.3	30.5	30.8
Maximum Power Current (A)	Imp	8.42	8.52	8.60
Open Circuit Voltage (V)	Voc	37.5	37.6	37.6
Short Circuit Current (A)	Isc	9.01	9.10	9.20
Module Efficiency (%)		15.50%	15.8%	16.1%

* At Standard Conditions (STC) Irradiance 1000 watt/m², spectrum AM 1,5 at a cell temperature of 25°C

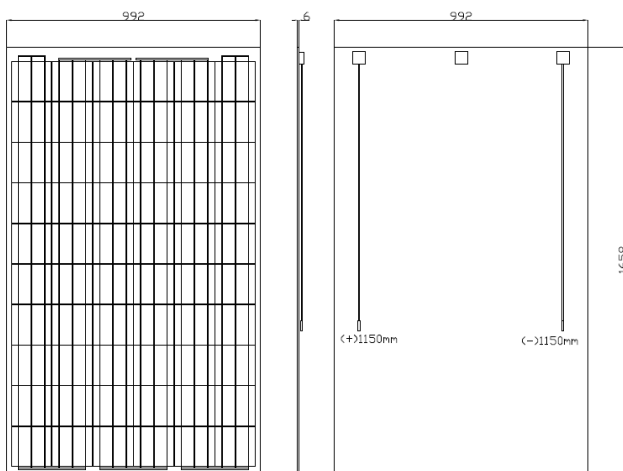
System Integrated Parameters

Maximum System Voltage SCII	1500 VDC
Maximum Reverse Current	Do not apply external voltages larger than Voc to the module
Operating Temperature	-40~+85°C
Max Series Fuse Rating	15A

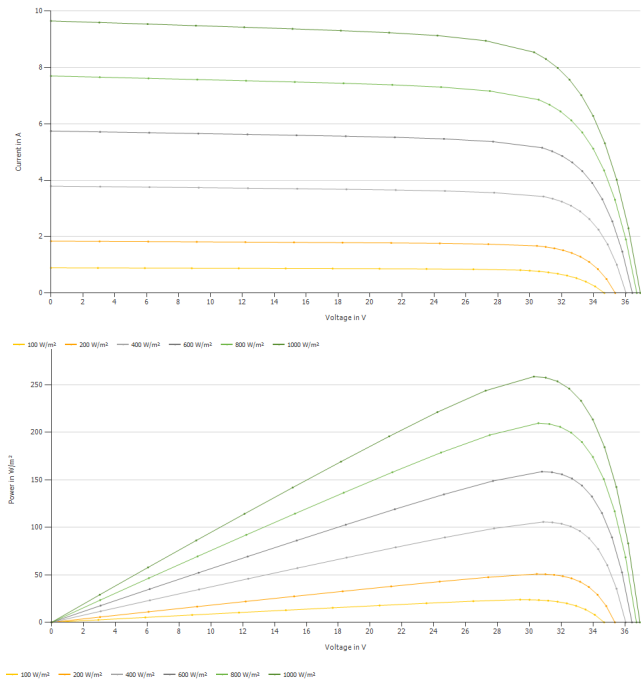
Front

Side

Rear



IV and VP Curve



Physical Characteristics

Module Dimension (L×W×H)	1658x992x6 mm (1658x992x25 mm with junction box)
Weight	23.5 kg
Module IP Grade / J-Box	IP65 or IP67 rated
Connector	MC4-EVO3 Compatible
Glass	Front: 2.5mm High Transmission, AR Coated Heat Strengthened Glass /Back: Heat Strengthened Glass 2.5mm
Cable	4 mm ² PV cable. Portrait: 2550/130 mm, Landscape:1150/1150.
Frame	Frameless
EVA	White

Packing Configuration

Modules Per Pallet	30 pieces
Pallet Per 40 'HQ Container	780 pieces
Packing Box Dimension (L×W×H)	1700×1150×1040 mm
Packing Orientation	Side

Zytech Solar reserves the right to change specifications without notice

*According to cells brand

ZYTECH SOLAR S.L.

P. Industrial Centrovía- C/R. Janeiro, 12
50198 La Muela (Zaragoza) SPAIN
Tel: +34 976 141819 / Fax: +34 976+141818
info@zytech.es
www.zytechsolar.es